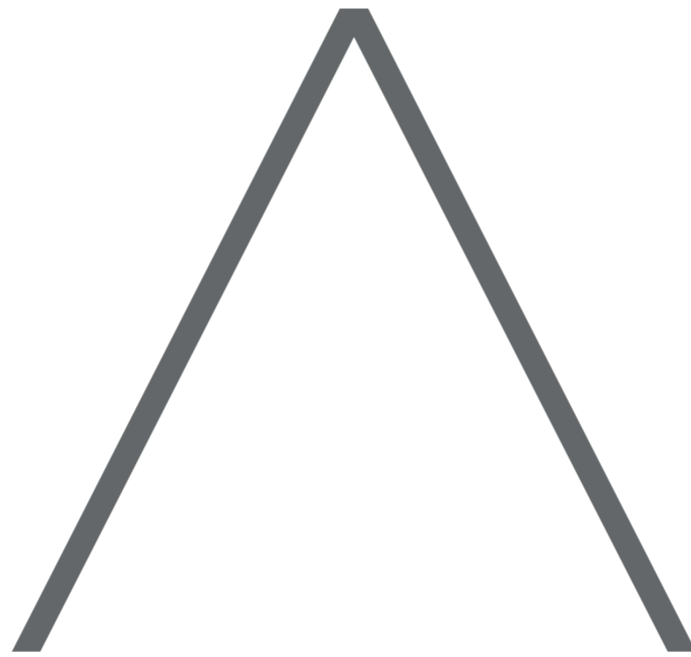


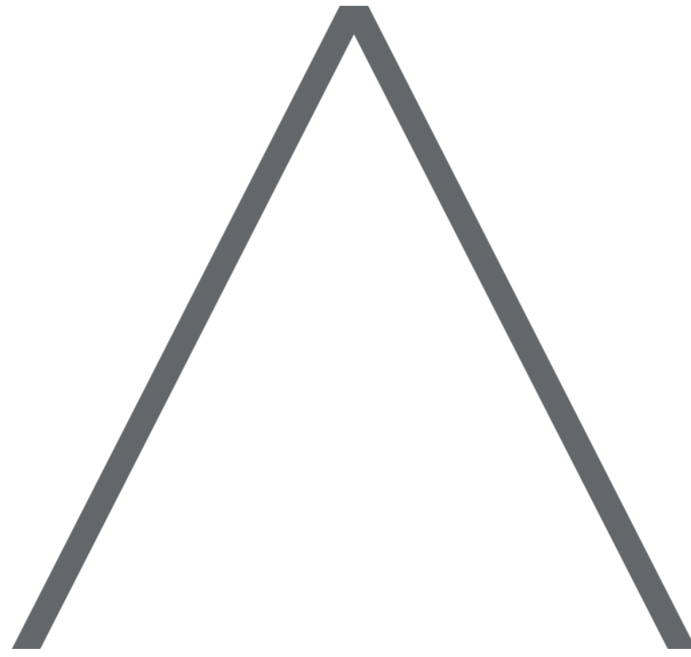
CONCEPT CONSULT
ARCHITECTES sarl

CONCEPT CONSULT
>DESIGN sarl

FUSIONNEMENT

CONCEPT & Co.
ARCHITECTES sarl





LE BUREAU

L'EQUIPE

SOCIETE

CONCEPT & Co.
ARCHITECTES sarl

EXPERIENCE

26 ANS (DEPUIS 1999)
600 PROJETS
430 REALISATIONS

TYOLOGIES ARCHITECTURALES

BÂTIMENTS INDUSTRIELS
BÂTIMENTS COMMERCIAUX
BÂTIMENTS PUBLICS
SIEGES
BOUTIQUES NESPRESSO
LOGEMENTS
TRANSFORMATIONS / RENOVATIONS / EXTENSIONS

ACTIVITE

ARCHITECTURE
ARCHITECTURE D'INTERIEUR
DESIGN 3D
SPECIALISTE DES COÛTS DE CONSTRUCTION
CONSULTANT

CONTACT

CONCEPT-CONSULT ARCHITECTES
GALERIE ST-FRANCOIS A
1003 LAUSANNE (CH)
INFO@CONCEPT-CONSULT.CH
CONCEPT-CONSULT.CH
+41 21 351 30 50

REALISATIONS INTERNATIONALES



CHRISTIAN BERUTTO

ARCHITECTE HES
MEMBRE SIA / REG A
05.11.1969 SUISSE

1986-1990 APPRENTISSAGE DE
DESSINATEUR EN BÂTIMENT
1991-1995 ECOLE TECHNIQUE
SUPERIEURE EIG GENEVE
1995-1999 ARCHITECTE C/O LUS-
CHER ARCHITECTES
2025 CREATION DE CONCEPT &
Co. ARCHITECTES

DAVID LINFORD

ARCHITECTE EPFL
MEMBRE SIA / RIBA / RAIA
05.09.1958 AUTRALIEN

1979-1982 BACHELOR EN AR-
CHITECTURE A L'UNIVERSITE DE
LONDRES
1984-1985 MASTER EN ARCHI-
TECTURE A L'UNIVERSITE DE
CAMBRIDGE
1990-1991 POSTGRADE A L'EPFL
1985-1988 ARCHITECTE C/O ED-
WARD CULLINAN (GB)
1988-1989 ARCHITECTE C/O ASS
ARCHITECTS (CH)
1989-1997 ARCHITECTE C/O LUS-
CHER ARCHITECTES
1996 CREATION DE CON-
CEPT-CONSULT ARCHITECTES

COMMUN

1997-2000 CREATION DE BLL
ARCHITECTES
2000 CREATION DE CON-
CEPT-CONSULT ARCHITECTES
SARL
2008 CREATION DE CON-
CEPT-CONSULT DESIGN SARL
2009 CREATION DE CCD INC.
USA

COLLABORATEURS / COLLABORATRICES

PIERRE BURLET
ARCHITECTE

SILVIA COCCOLO
ARCHITECTE

ALEXANDRE CHAVAILLAZ
INFOGRAPHISTE

VALERIE DUPASQUIER
ARCHITECTE D'INTERIEUR

EMMA LINFORD
GRAPHISTE / ARCHIVISTE

AISLING MCMULLEN
ARCHITECTE

ANDREA PINTO
DESSINATRICE EN BÂTIMENT

ELSA STUCKI
DESSINATRICE EN BÂTIMENT

JANETH VILLA
ARCHITECTE

JESSICA YOUNES
ARCHITECTE D'INTERIEUR

COLLABORATEURS / COLLABORATRICES EXTERNES

WALTER GUBSER
ARCHITECTE / SPECIALISTE DES COÛTS DE CONSTRUCTION

STEFAN MICHEL
ARCHITECTE

CORINNE PACHE
COMPTABILITE

CARLO ORSINO
PLUS FIDUCIAIRE SARL

OFFICE

COMPANY

CONCEPT & Co.
ARCHITECTES sarl

EXPERIENCE

26 YEARS (SINCE 1999)
600 PROJECTS
430 IMPLEMENTATIONS

ARCHITECTURAL TYPOLOGIES

INDUSTRIEL BUILDINGS
COMMERCIAL BUILDINGS
PUBLIC BUILDINGS
HEADQUARTERS
NESPRESSO BOUTIQUES
HOUSING
TRANSFORMATIONS / RENOVATIONS / EXTENSIONS

ACTIVITY

ARCHITECTURE
INTERIOR ARCHITECTURE
3D DESIGN
CONSTRUCTION COST SPECIALIST
CONSULTANT

CONTACT

CONCEPT-CONSULT ARCHITECTES
GALERIE ST-FRANCOIS A
1003 LAUSANNE (CH)
INFO@CONCEPT-CONSULT.CH
CONCEPT-CONSULT.CH
+41 21 351 30 50

INTERNATIONAL IMPLEMENTATIONS



TEAM

COLLABORATORS

PIERRE BURLET
ARCHITECT

SILVIA COCCOLO
ARCHITECT

ALEXANDRE CHAVAILLAZ
GRAPHIC & 3D DESIGNER

VALERIE DUPASQUIER
INTERIOR ARCHITECT

EMMA LINFORD
GRAPHIC DESIGNER / ARCHIVIST

AIKLING MCMULLEN
ARCHITECT

ANDREA PINTO
BUILDING DRAWER

ELSA STUCKI
BUILDING DRAWER

JANETH VILLA
ARCHITECT

JESSICA YOUNES
INTERIOR ARCHITECT

EXTERNAL COLLABORATORS

WALTER GUBSER
ARCHITECT / CONSTRUCTION COST SPECIALIST

STEFAN MICHEL
ARCHITECT

CORINNE PACHE
ACCOUNTANT

CARLO ORSINO
PLUS FIDUCIAIRE SARL (FIDUCIARY COMPANY)

CHRISTIAN BERUTTO

HES ARCHITECT
SIA / REG A MEMBER
05.11.1969 SWISS

1986-1990 BUILDING DRAWER
APPRENTICESHIP
1991-1995 GRADUATE SCHOOL
EIG GENEVA
1995-1999 ARCHITECT C/O LUS-
CHER ARCHITECTES
2025 CREATION OF CONCEPT &
Co. ARCHITECTES

DAVID LINFORD

EPFL ARCHITECT
SIA / RIBA / RAIA MEMBER
05.09.1958 AUSTRALIAN

1979-1982 BACHELORS DEGREE
IN ARCHITECTURE AT LONDON
UNIVERSITY
1984-1985 MASTERS DEGREE IN
ARCHITECTURE AT CAMBRIDGE
UNIVERSITY
1990-1991 POSTGRADUATE DE-
GREE AT EPFL
1985-1988 ARCHITECT C/O ED-
WARD CULLINAN (GB)
1988-1989 ARCHITECTE C/O ASS
ARCHITECTS (CH)
1989-1997 ARCHITECT C/O LUS-
CHER ARCHITECTES
1996 CREATION OF CON-
CEPT-CONSULT ARCHITECTES

COMMUN

1997-2000 CREATION OF BLL
ARCHITECTES
2000 CREATION OF CON-
CEPT-CONSULT ARCHITECTES
SARL
2008 CREATION OF CON-
CEPT-CONSULT DESIGN SARL
2009 CREATION OF CCD INC.
USA

PROJETS MAJEURS / MAJOR PROJECTS



USINE NESPRESSO, ORBE, 2006



CENTRAL BUILDING, ORBE, 2006



ALUPAK, BELP, 2007



LUCE MS SA, GRANGES-MARNAND, 2014



ENCLENCHEMENT CFF, RENENS, 2015



BOUTIQUES MÖVENPICK, 2015



PTC D BUILDING, ORBE, 2007



VILLAS CHEXBRES, 2007



USINE NESPRESSO, AVENCHES, 2009



PTC SOLON, OHIO, USA, 2015



NEST, VEVEY, 2016



VILLA CATELLANI, GRANGES-MARNAND, 2016



MAISON CAILLER, BROC, 2009



CPW, ORBE, 2011



GINOX SA, MONTREUX, 2011



ENCLENCHEMENT CFF, LAUSANNE, 2017



PTC NESTLE, KONOLFINGEN, 2108



CHB MEDIN, BIENNE, 2019



VILLAS CHESEAU-NOREAZ, 2012



CAN NESTLE SHOP, ORBE, 2012



NSTC, ORBE, 2012



PTC HUB NESTLE, KONOLFINGEN, 2020



EXT. BLUEBEAR NESTLE, KONOLFINGEN, 2021



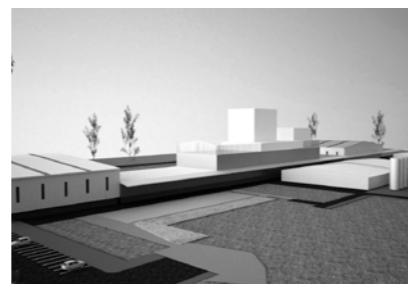
OMPI, GENÈVE, 2021



PAVILLON CAILLER, BROC, 2012



NESPRESSO BOUTIQUES, 2012



NESTLE PUELCHÉ, CHILI, 2012



CHALET, CHESIÈRES, 2024

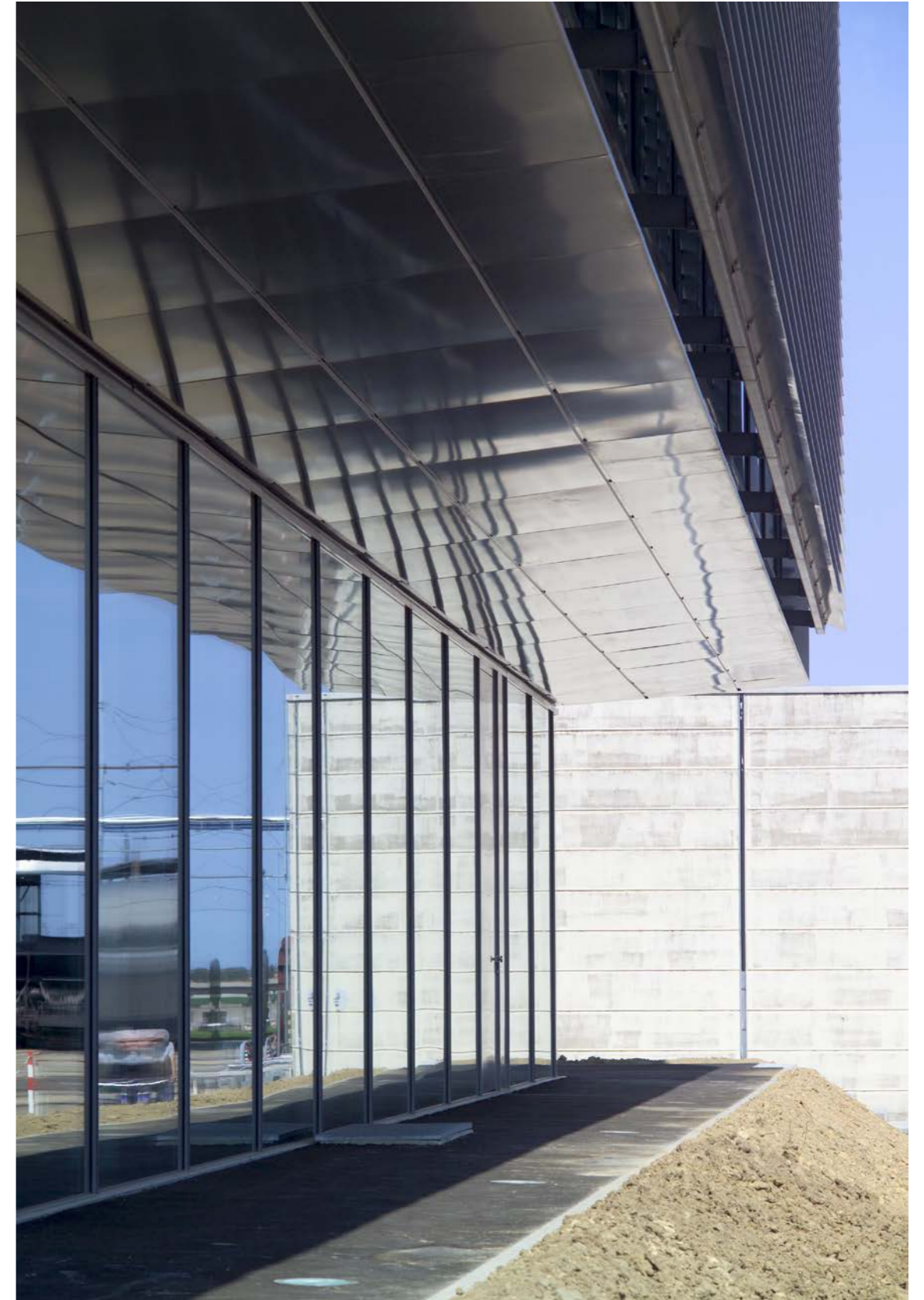


CHB SILVERTOWER, BIENNE, 2024

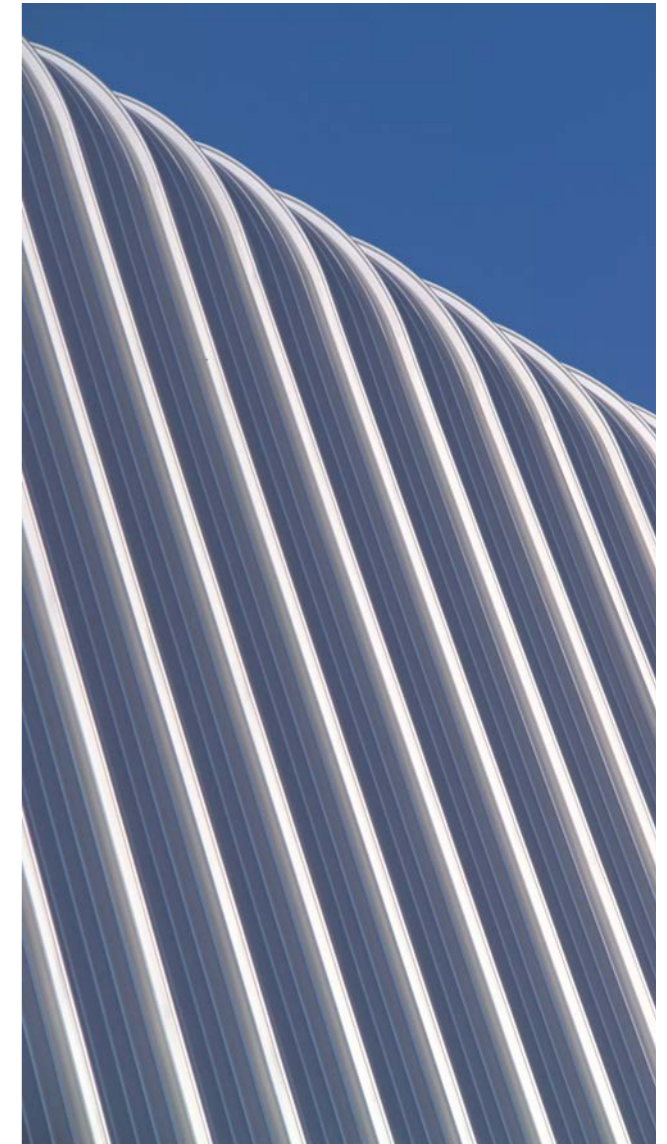
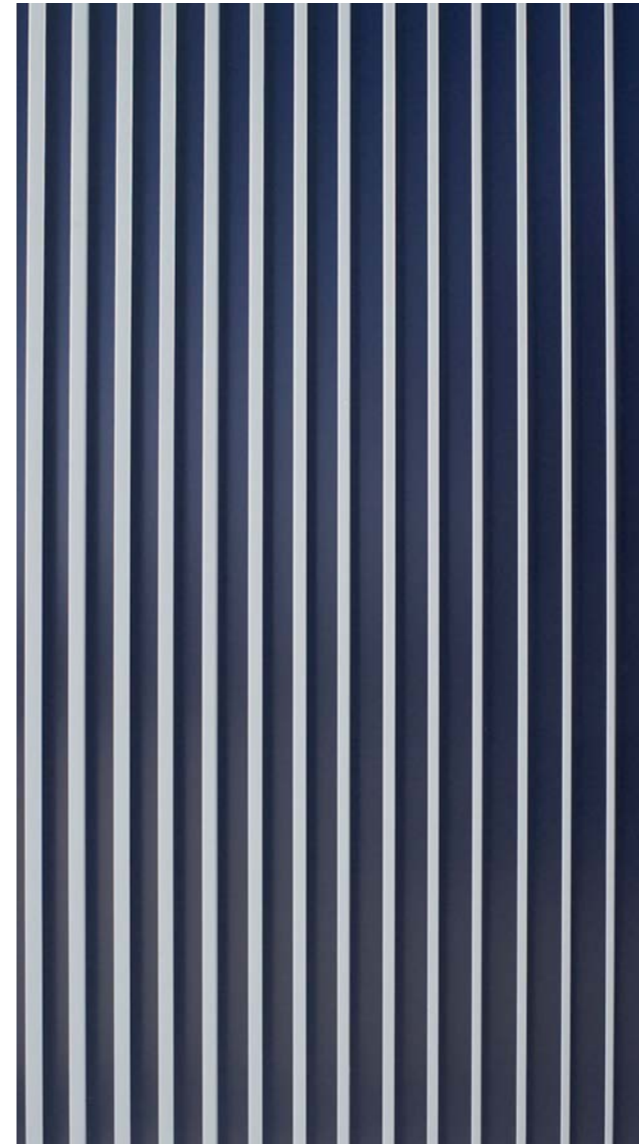


NESPRESSO NN XL, ORBE, 2024

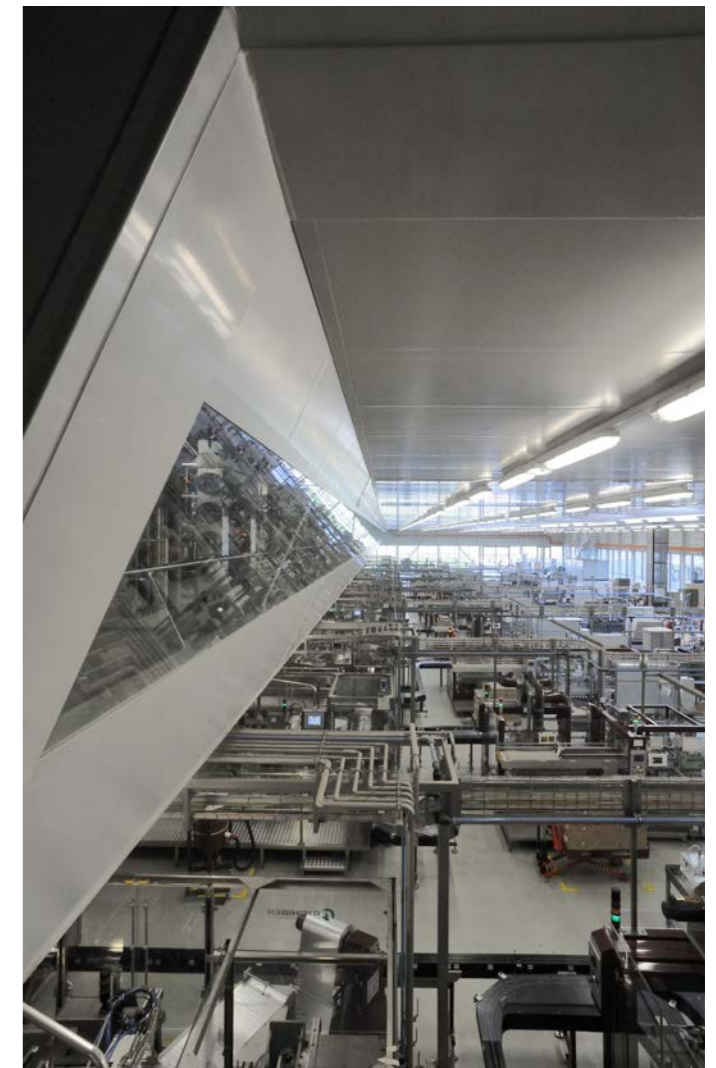
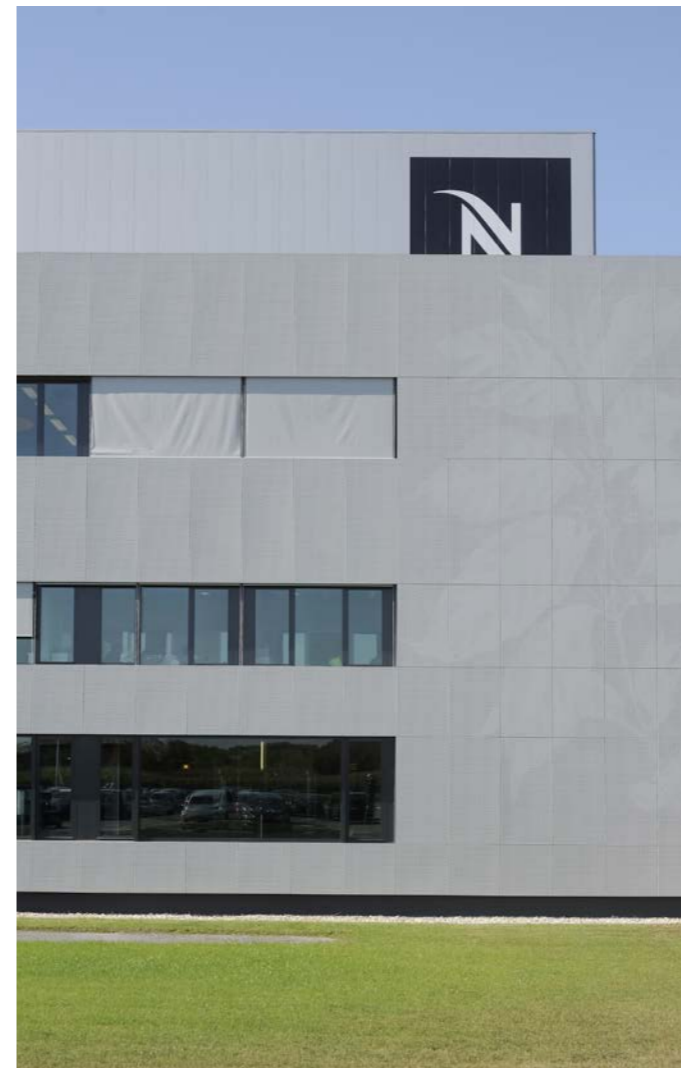
CENTRAL BUILDING, ORBE, CH, 2006



ALUPAK, BELP, CH, 2007



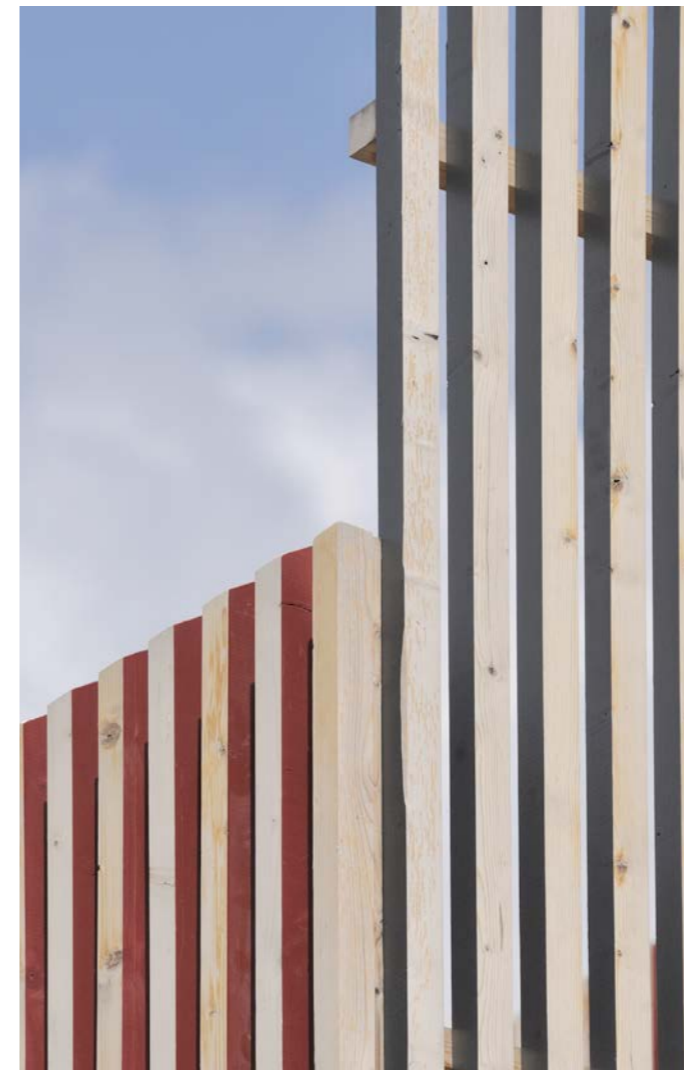
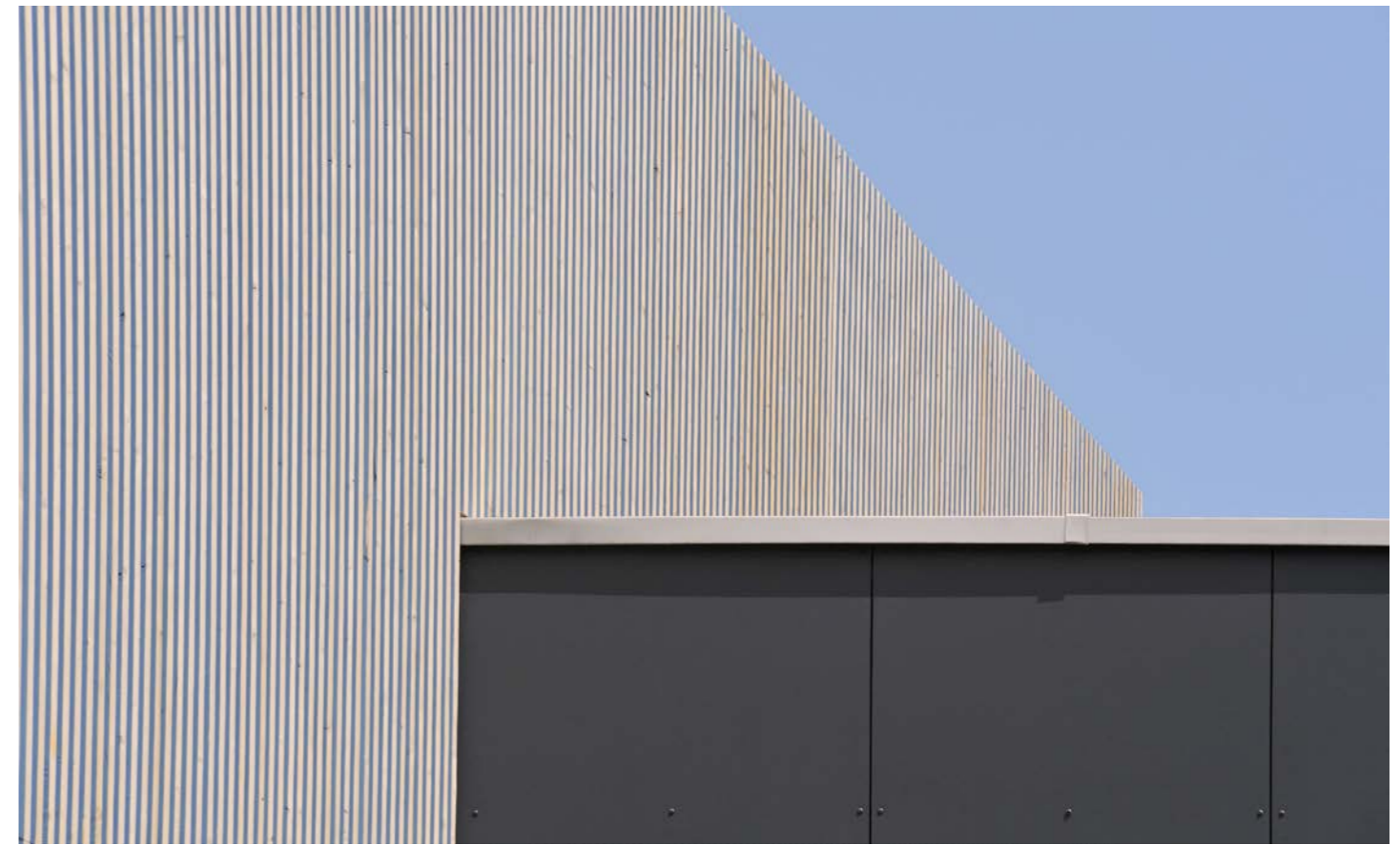
USINE NESPRESSO, AVENCHES, CH, 2009



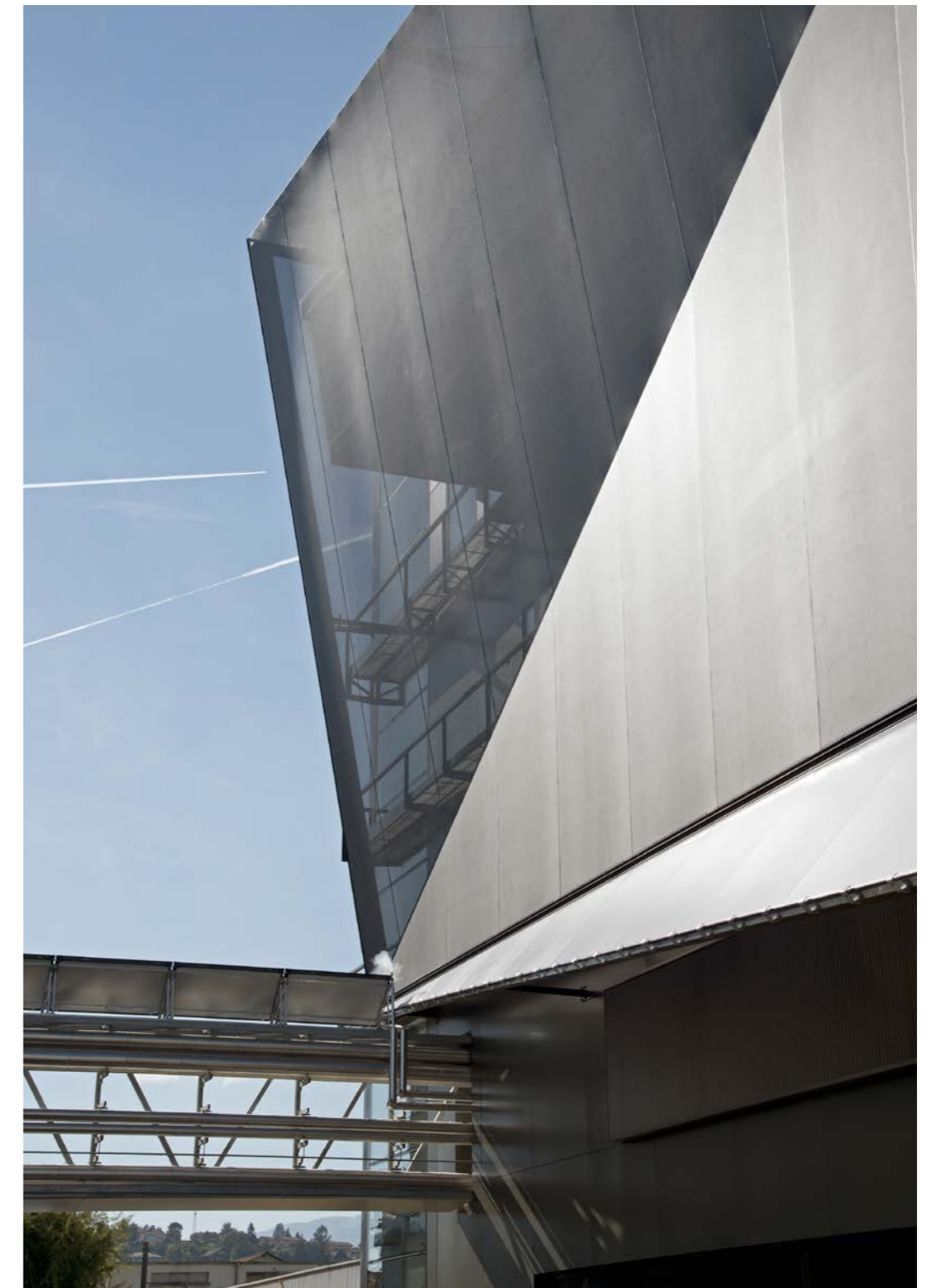
CPW, ORBE, CH, 2011



VILLAS CHESEAUX-NOREAZ, CH, 2012



NSTC, ORBE, CH, 2012



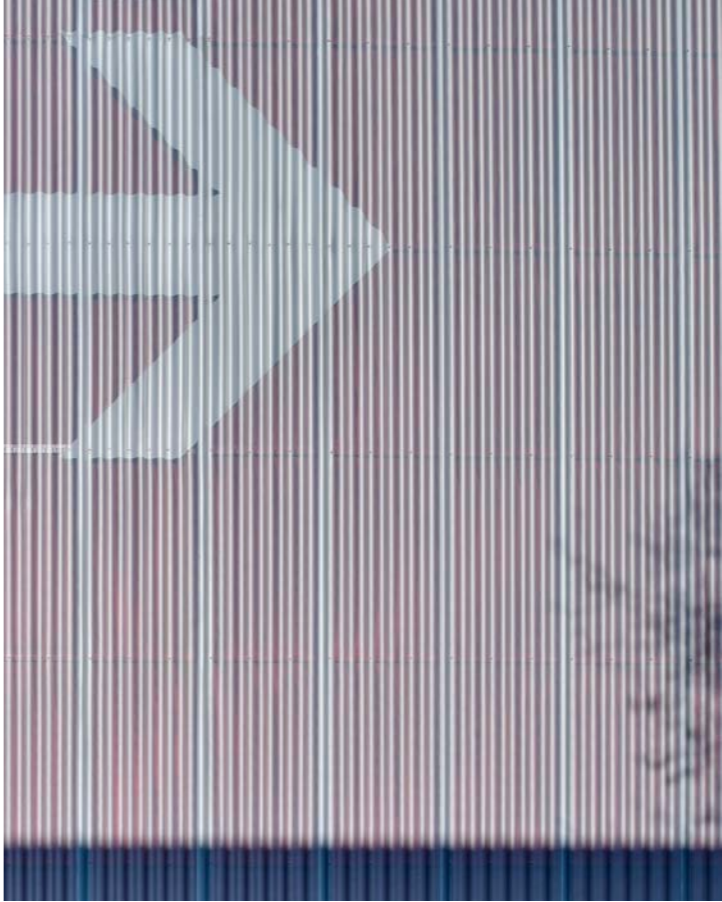
PAVILLON CAILLER, BROCC, CH, 2012



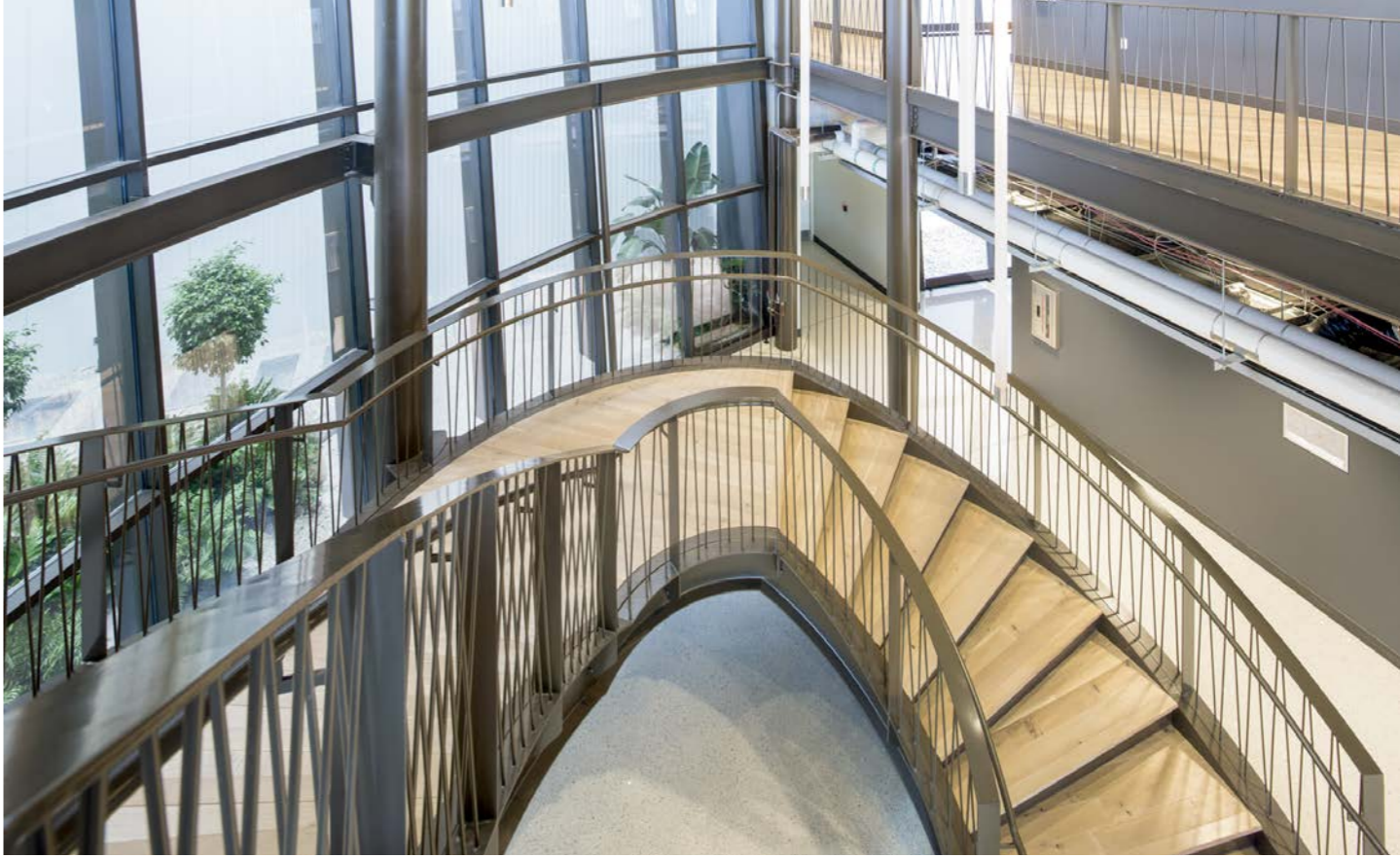
NESPRESSO BOUTIQUES, 2012



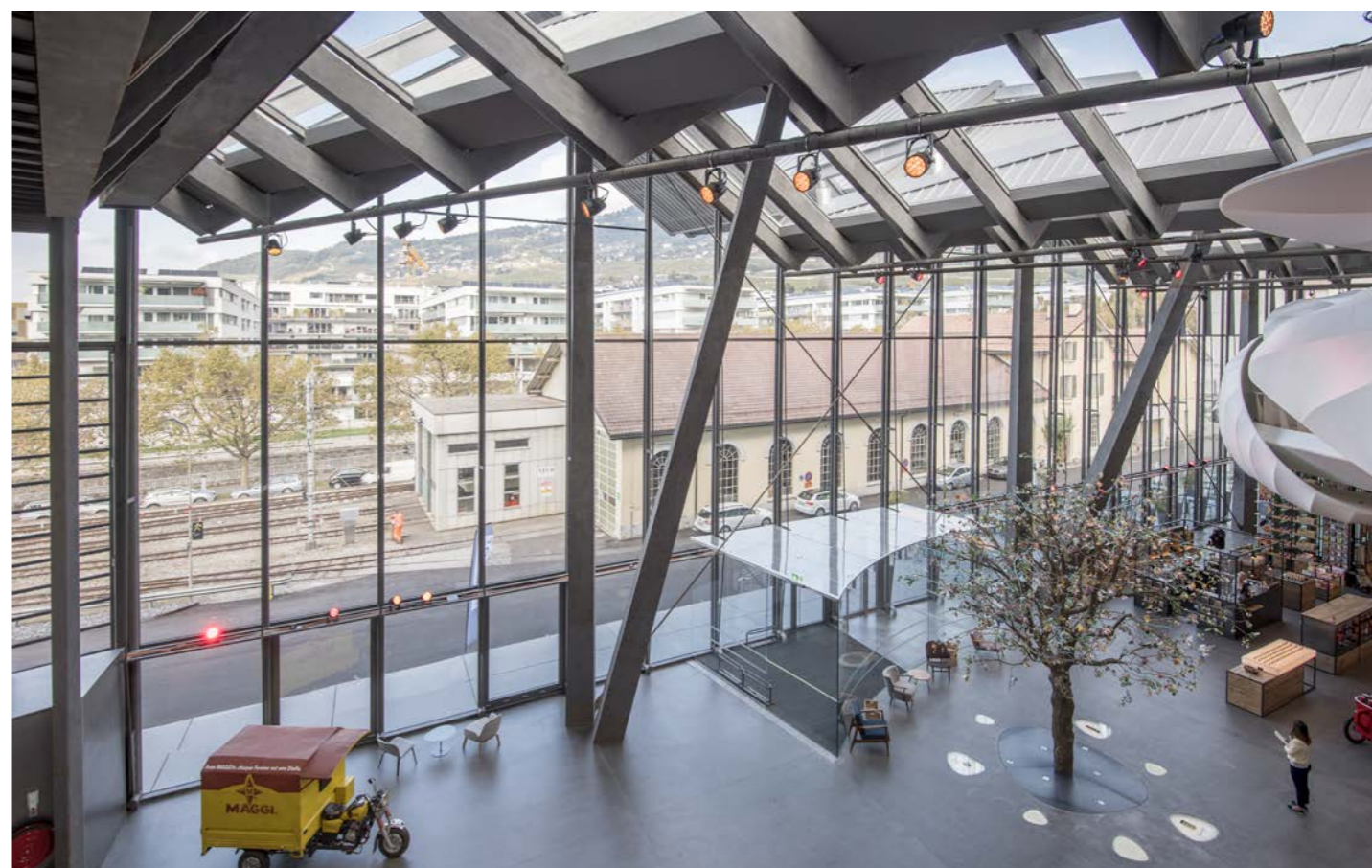
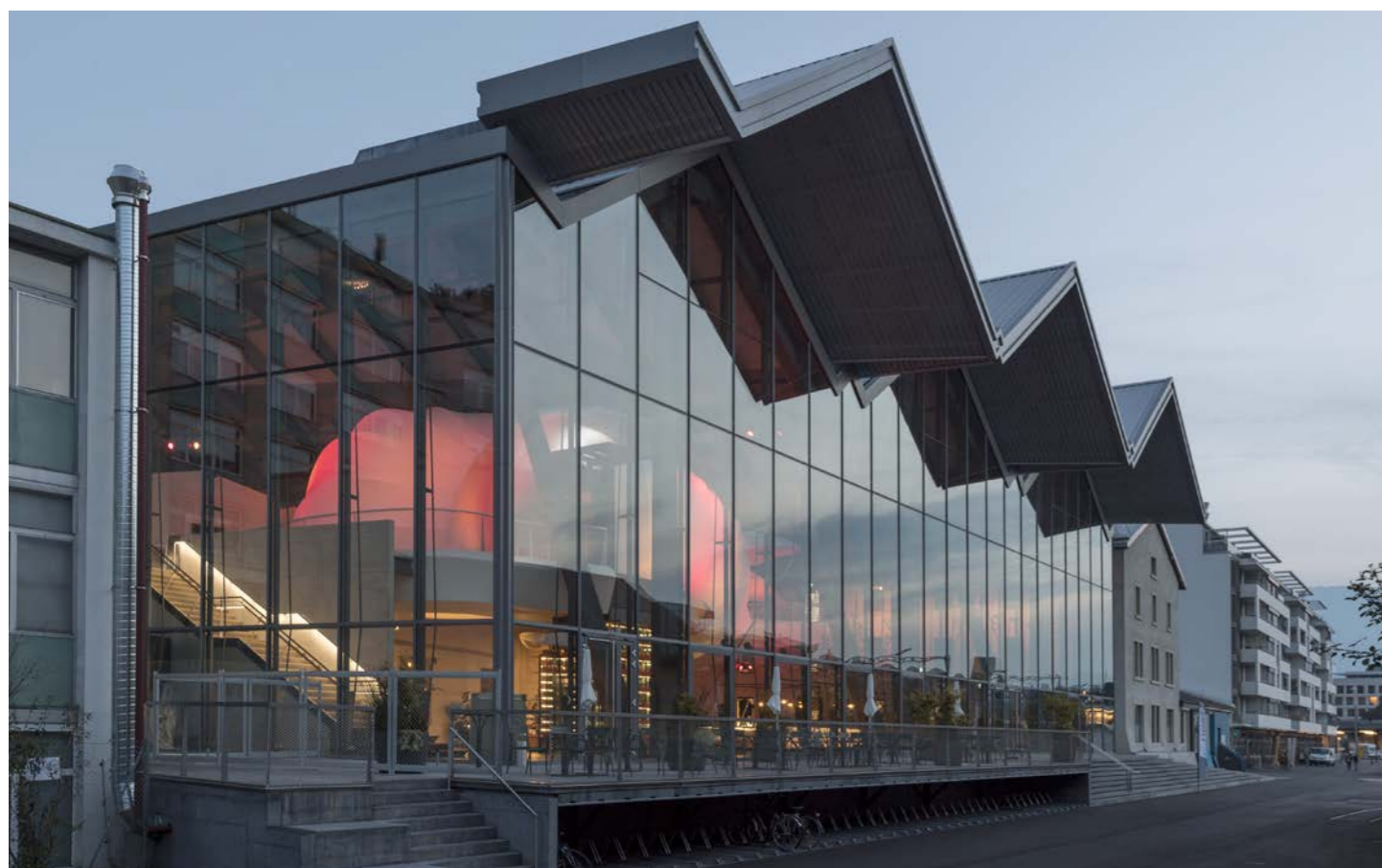
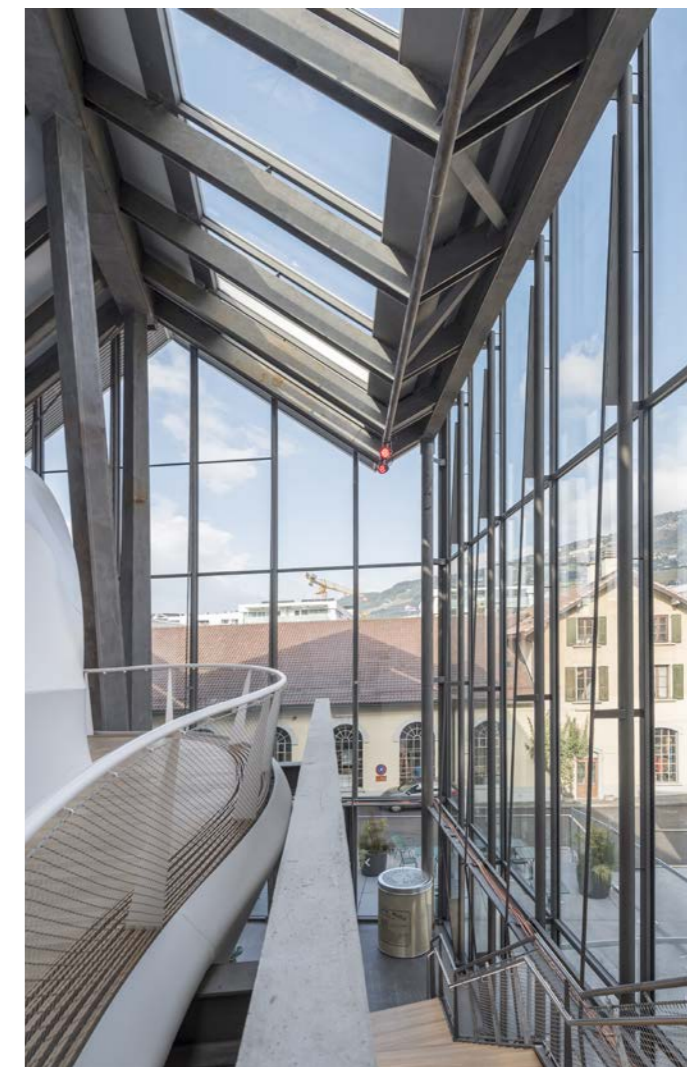
ENCLÈNCHÉMENT CFF, RENENS, CH, 2015



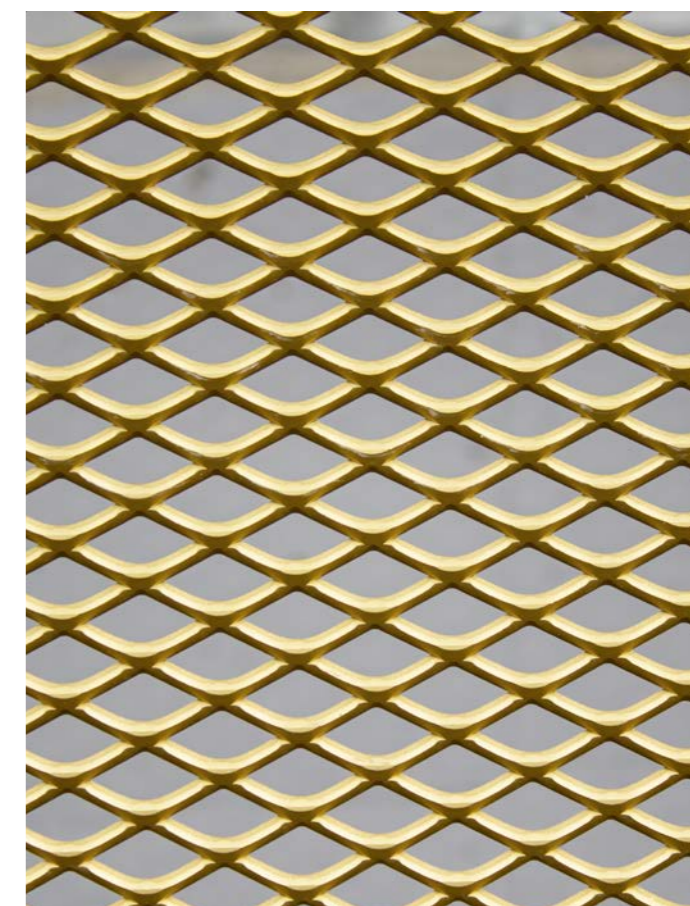
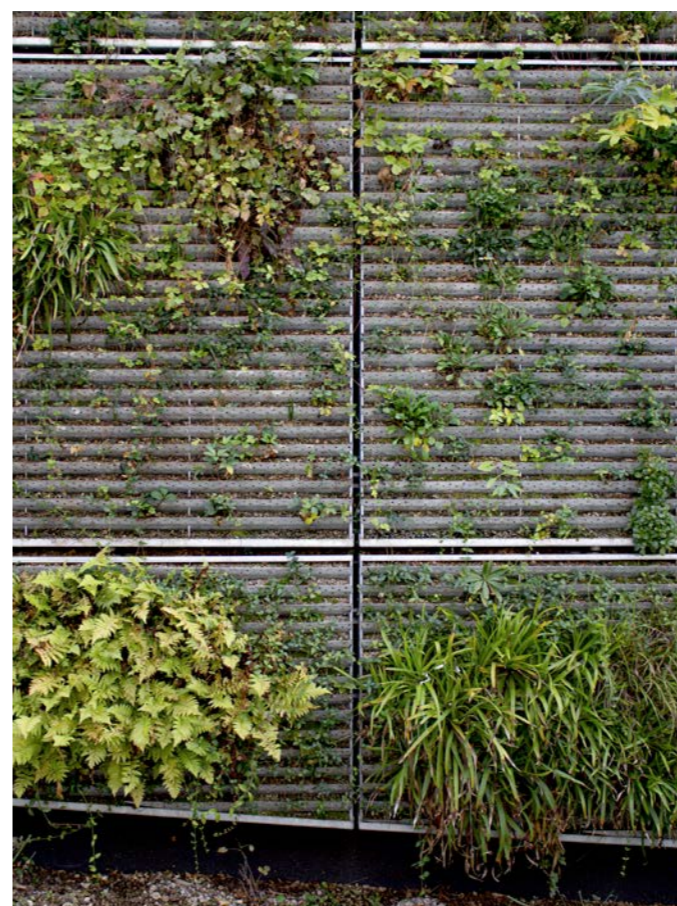
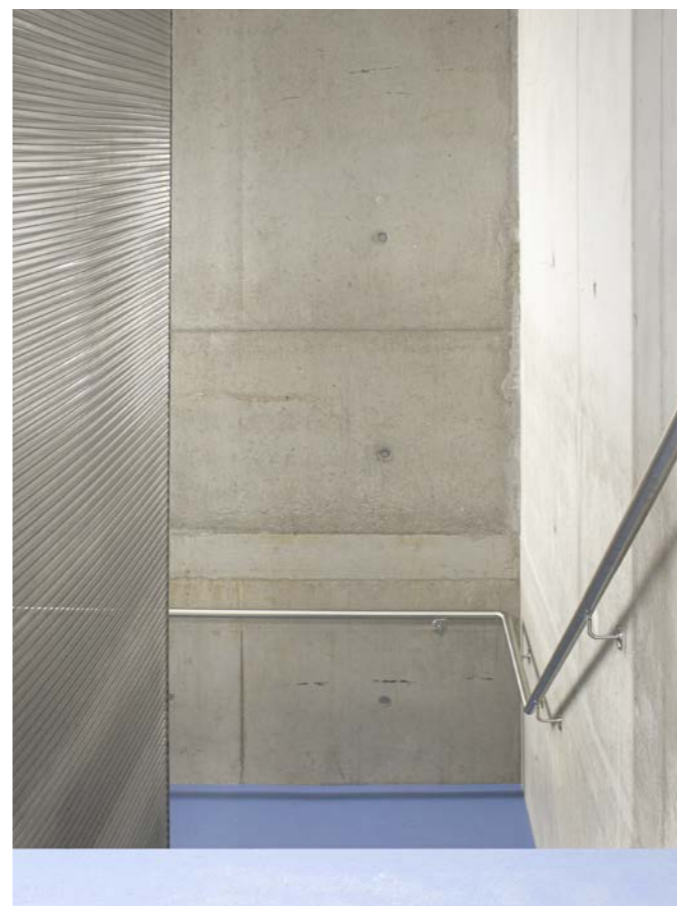
PTC SOLON, OHIO, USA, 2015



NEST, VEVEY, CH, 2016



ENCLÈNCHEMENT CFF, LAUSANNE, CH, 2017



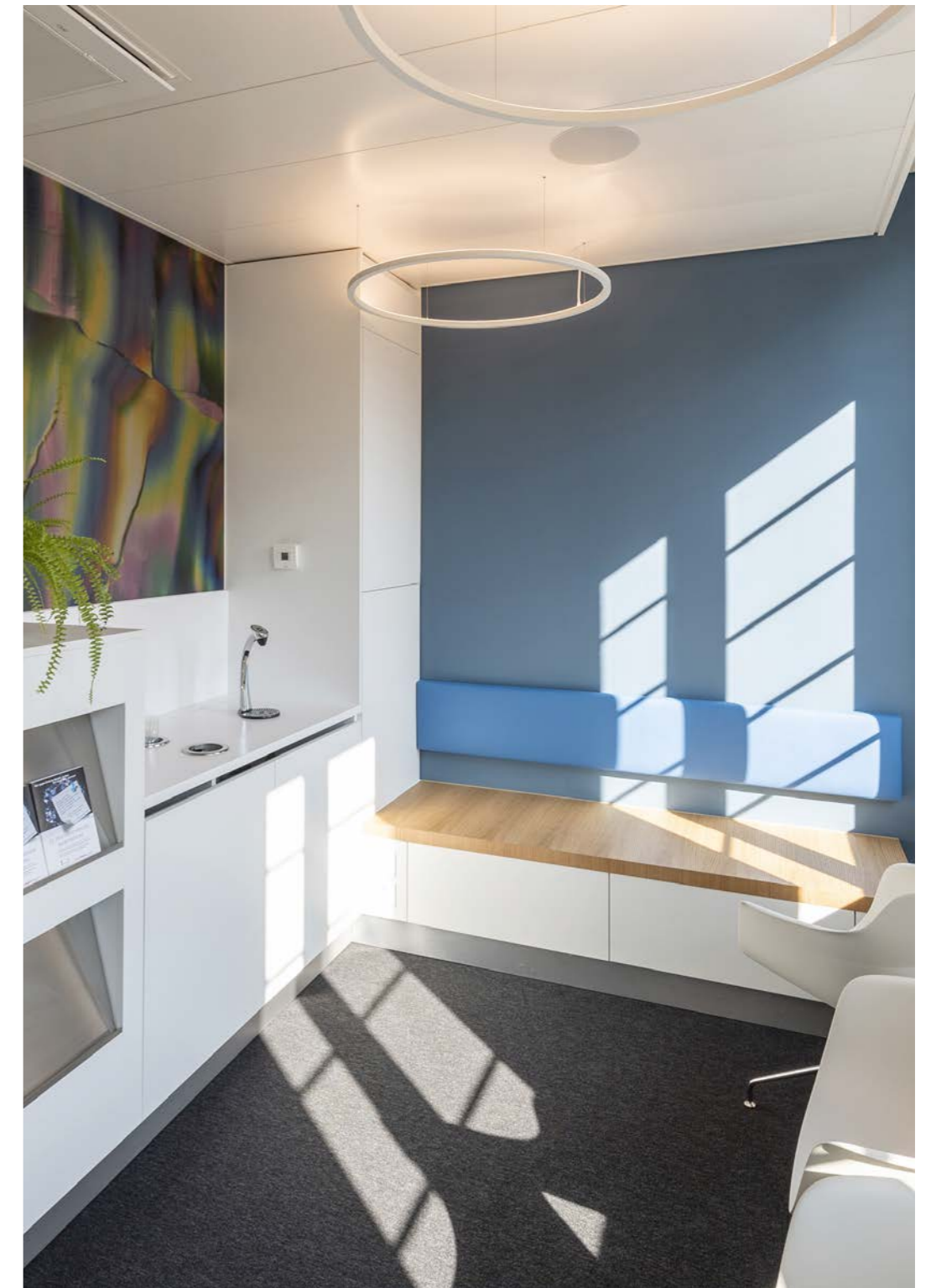
CHB MEDIN, BIENNE, CH, 2019



PTC HUB, KONOLFINGEN, CH, 2020



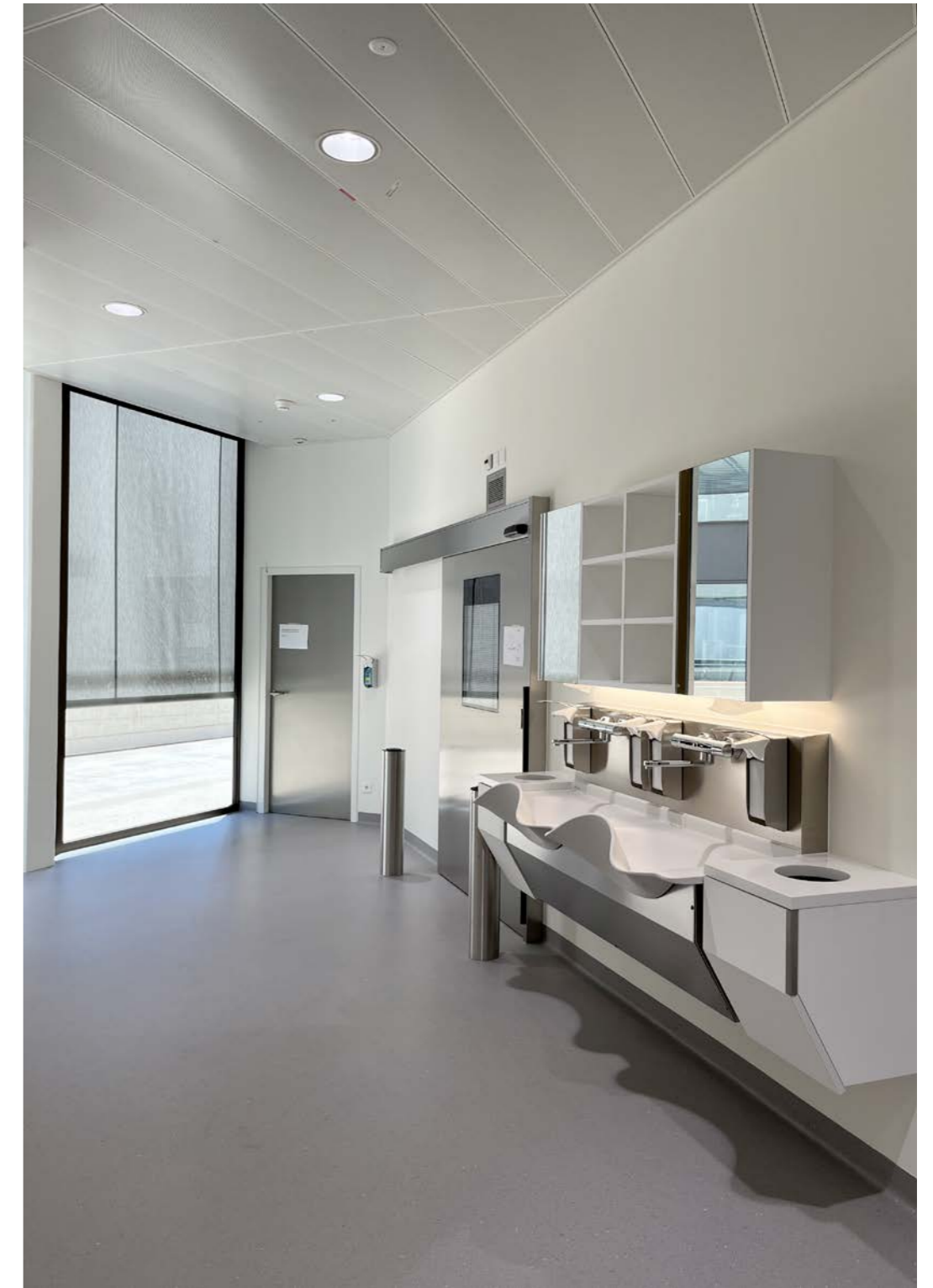
CHB ENDODIA, BIENNE, CH, 2021



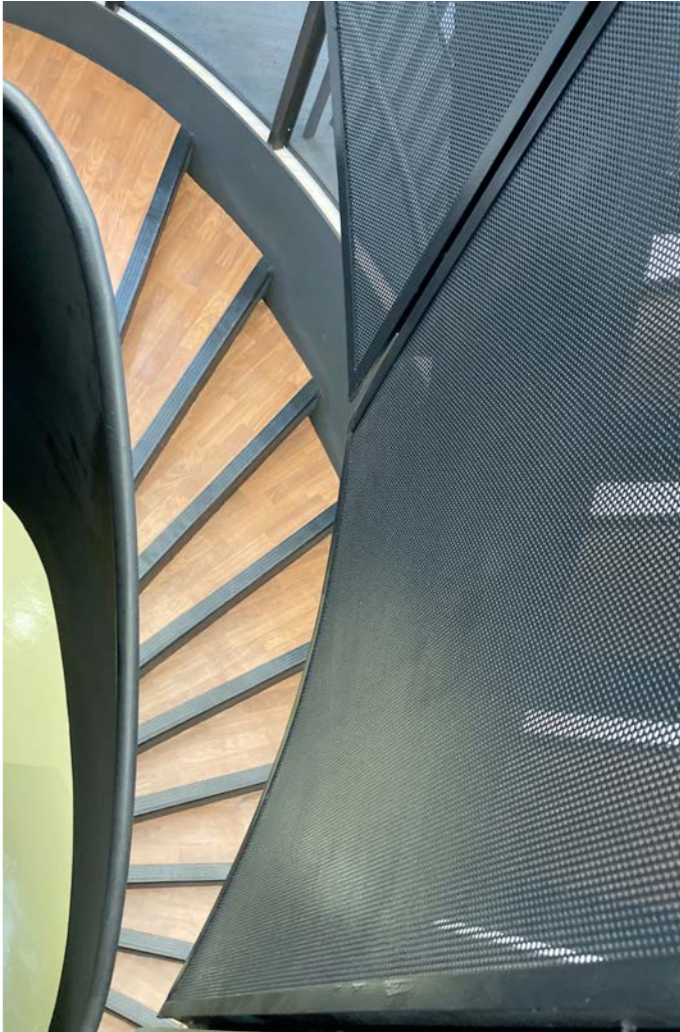
OMPI, GENEVE, CH, 2021



CHB AOP, BIENNE, CH, 2022



R&D SINGAPORE, SGP, 2023



MAISON DESPRAZ, VILLARZEL, 2023



MAISON, CHESIÈRES, CH, 2024



CHB SILVERTOWER, BIENNE, CH, 2024



NESPRESSO NN XL, ORBE, CH, 2024

